

Societal Polarization

VS

{Global Harwell | Collective wellbeing }

in the age of AI & Social Media

Dimitri Ognibene

Università degli Studi di Milano Bicocca

Top 10 risks

"Please estimate the likely impact (severity) of the following risks over a 2-year and 10-year period."

Societal Polarization



2 years

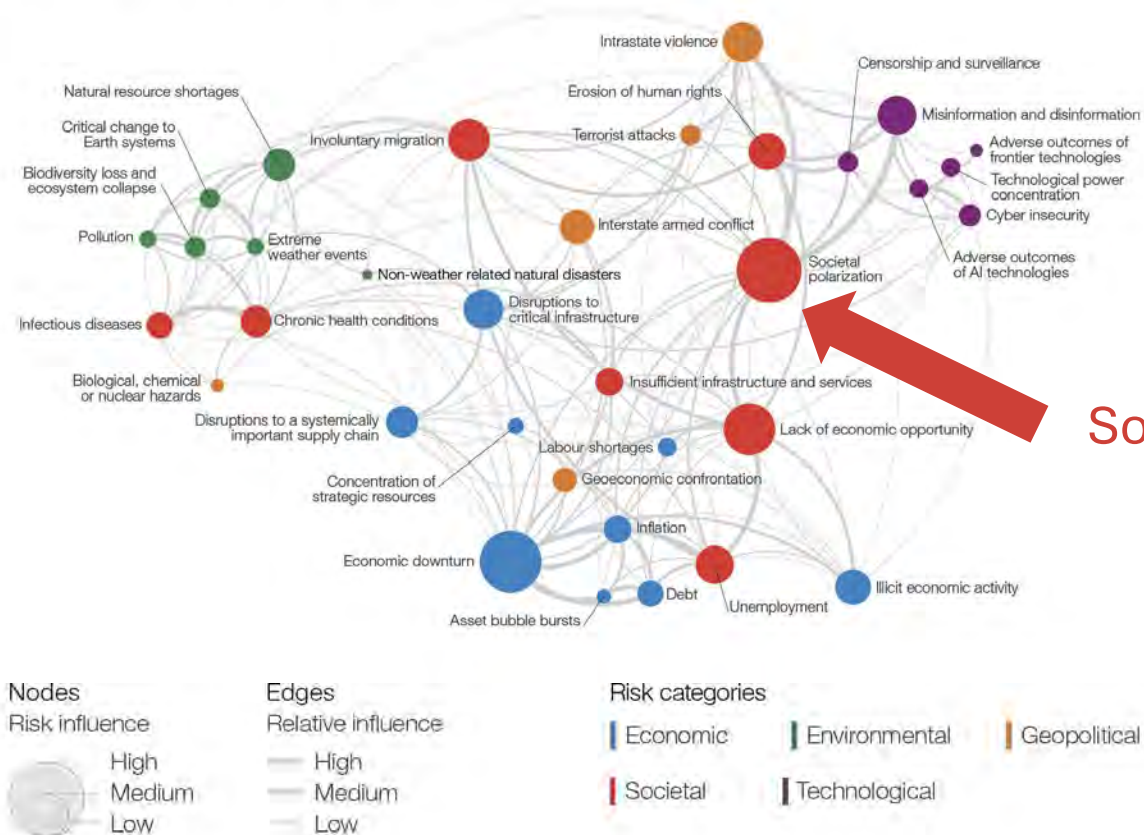


10 years



Risk categories | Economic | Environmental | Geopolitical | Societal | Technological

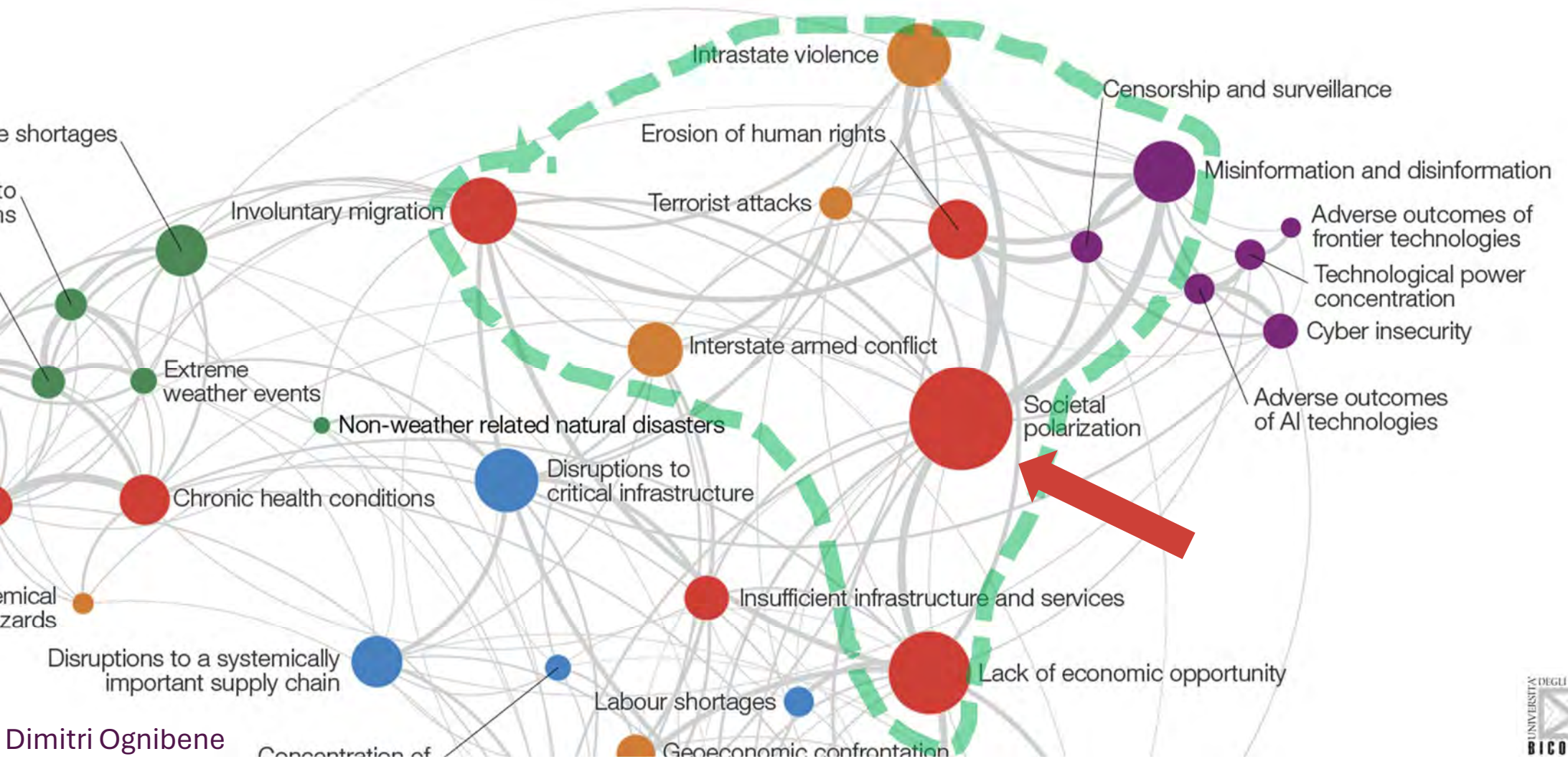
Global risks landscape: an interconnections map



Societal Polarization

Source: World Economic Forum Global Risks Perception Survey 2023-2024.

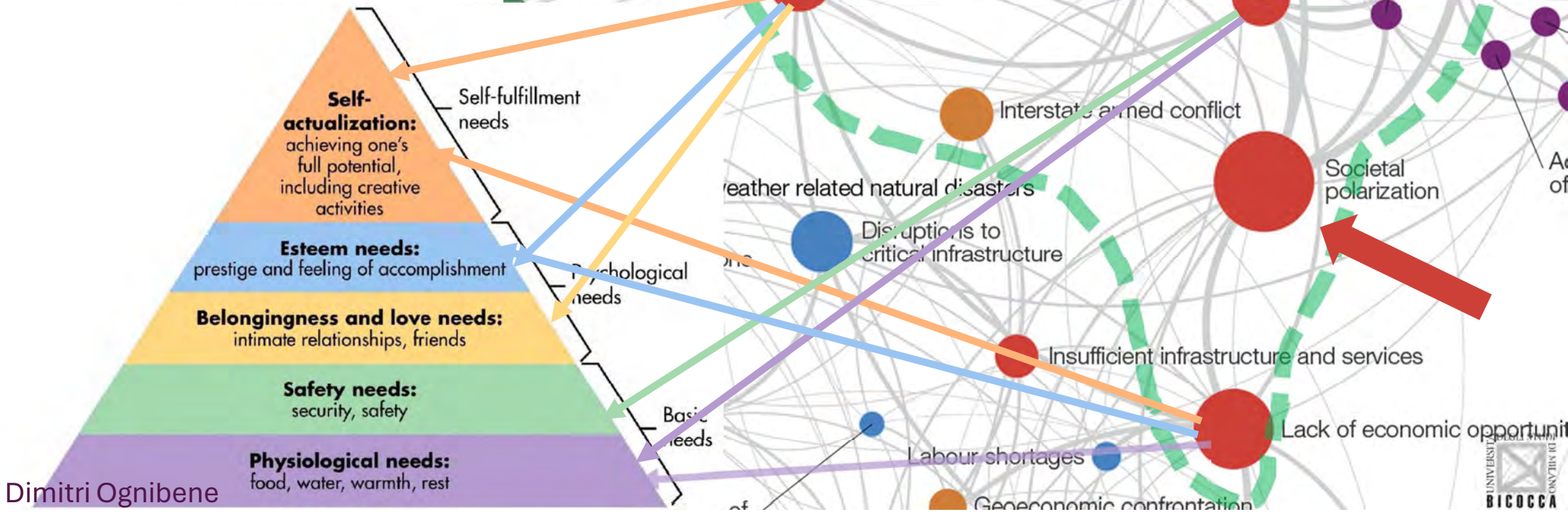
Connections map



Dimitri Ognibene

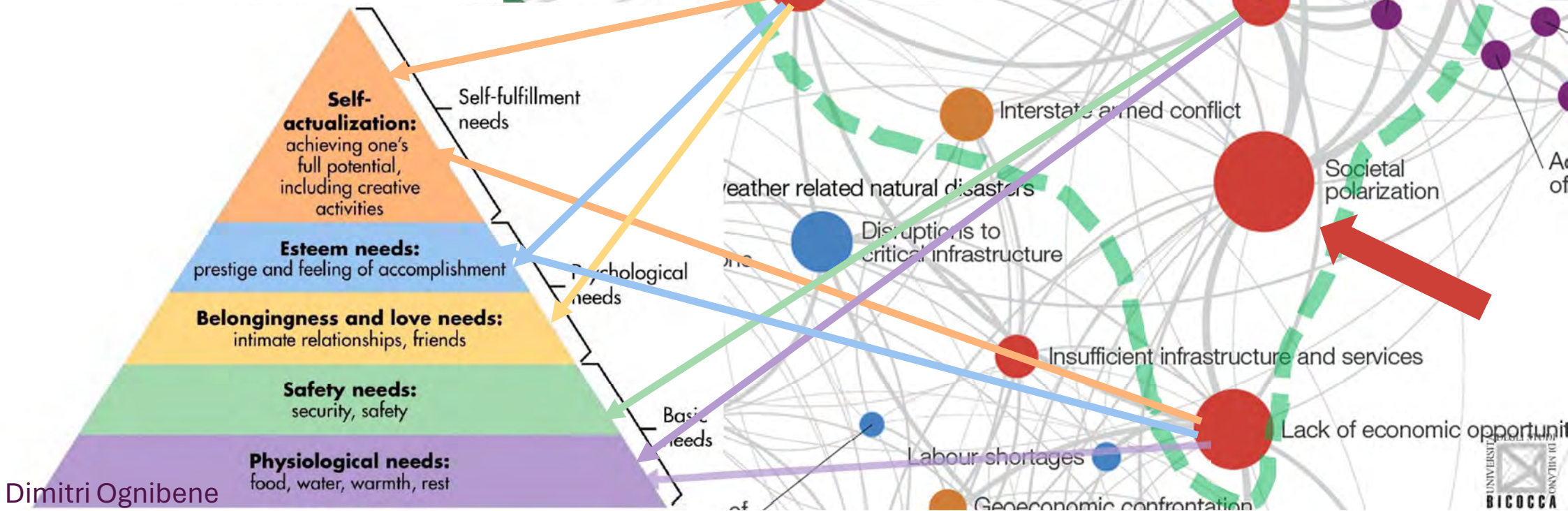
interconnections map

Maslow's hierarchy of needs



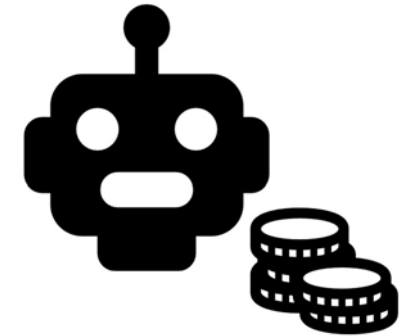
Societal Polarization = - Global Harwell

Maslow's hierarchy of needs



Social Media AI Algorithms and Polarization

- Filter bubbles
 - AI actively confirms one's bias
- Echo Chambers
 - AI actively find same minded people
- Engagement driven business model
 - AI pursues engagement generated both by enjoyment or contrasts
- All these processes may exacerbate Polarization



(More at the end)

Design of **social media AI** algorithms may have a strong impact on **social polarization**

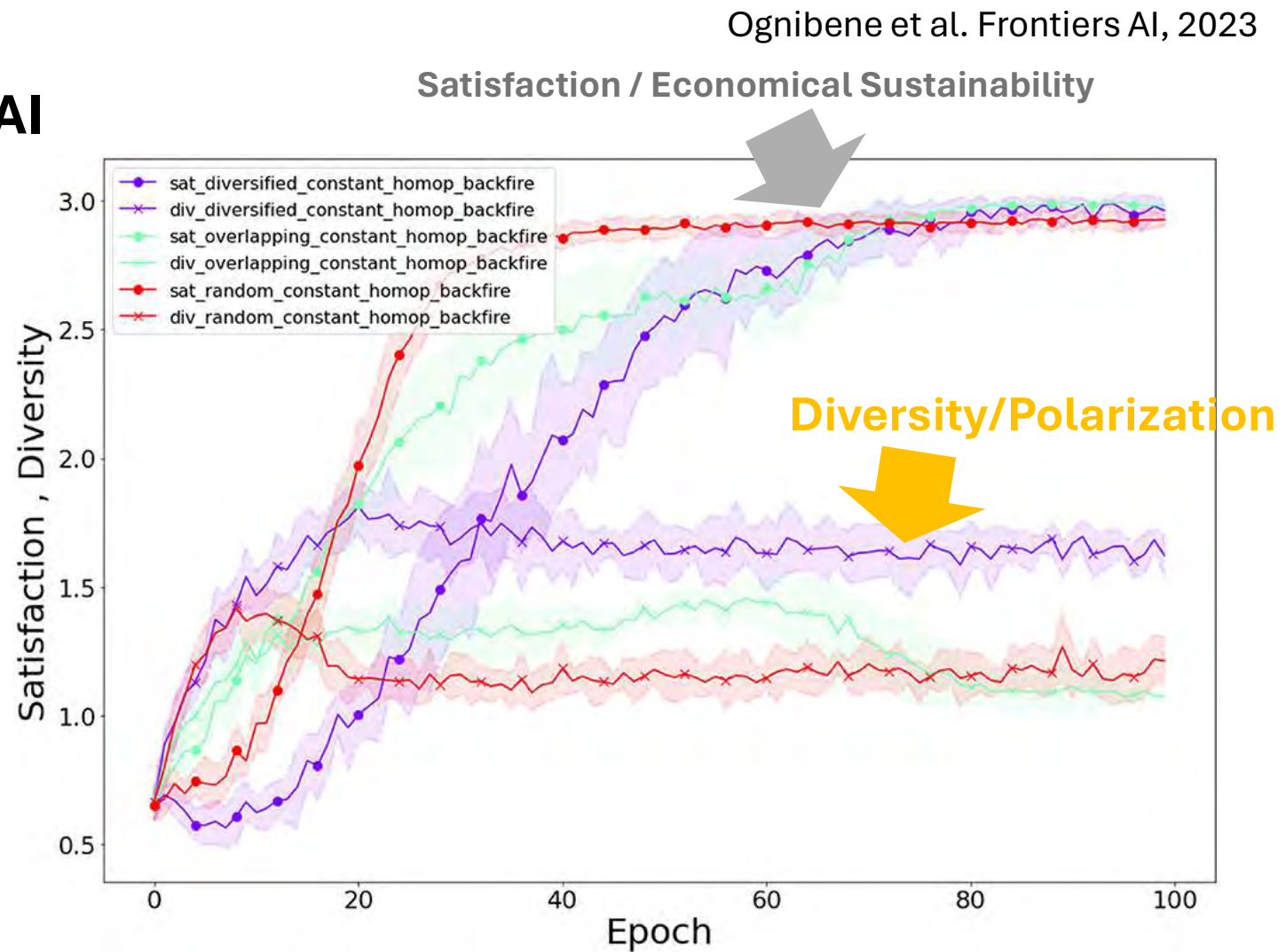


Figure 6. Simulated impact of different recommender systems on users' satisfaction and content diversity exposure.

Design of **social media AI** algorithms may have a strong impact on **social polarization**

1st problem

Social Media Platforms have **no interest** in **regulating their AIs** (see what happened to **Twitter.. Ehm X**)



Ognibene et al. Frontiers AI, 2023

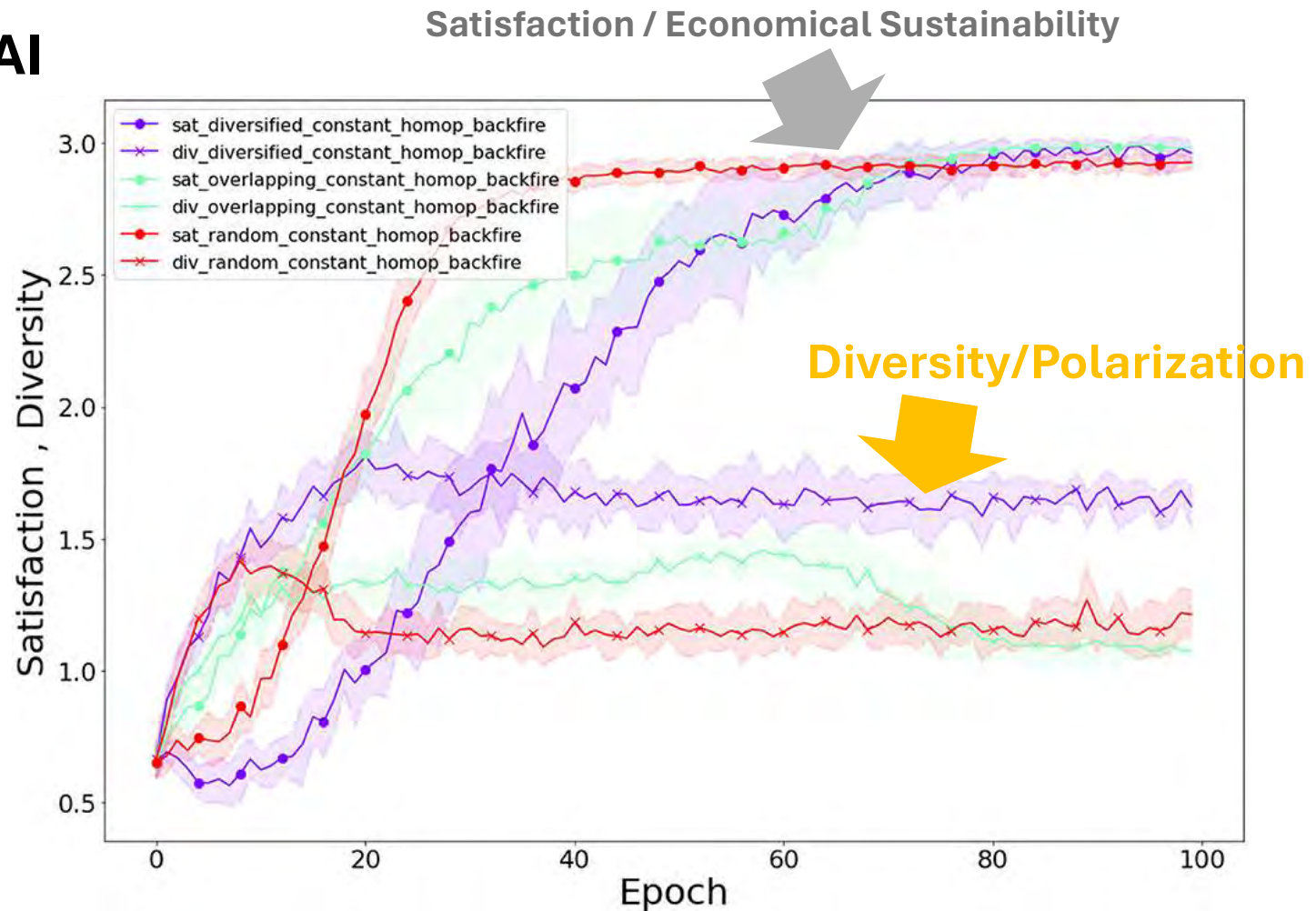


Figure 6. Simulated impact of different recommender systems on users' satisfaction and content diversity exposure.

Polarized society or polarizing technology?

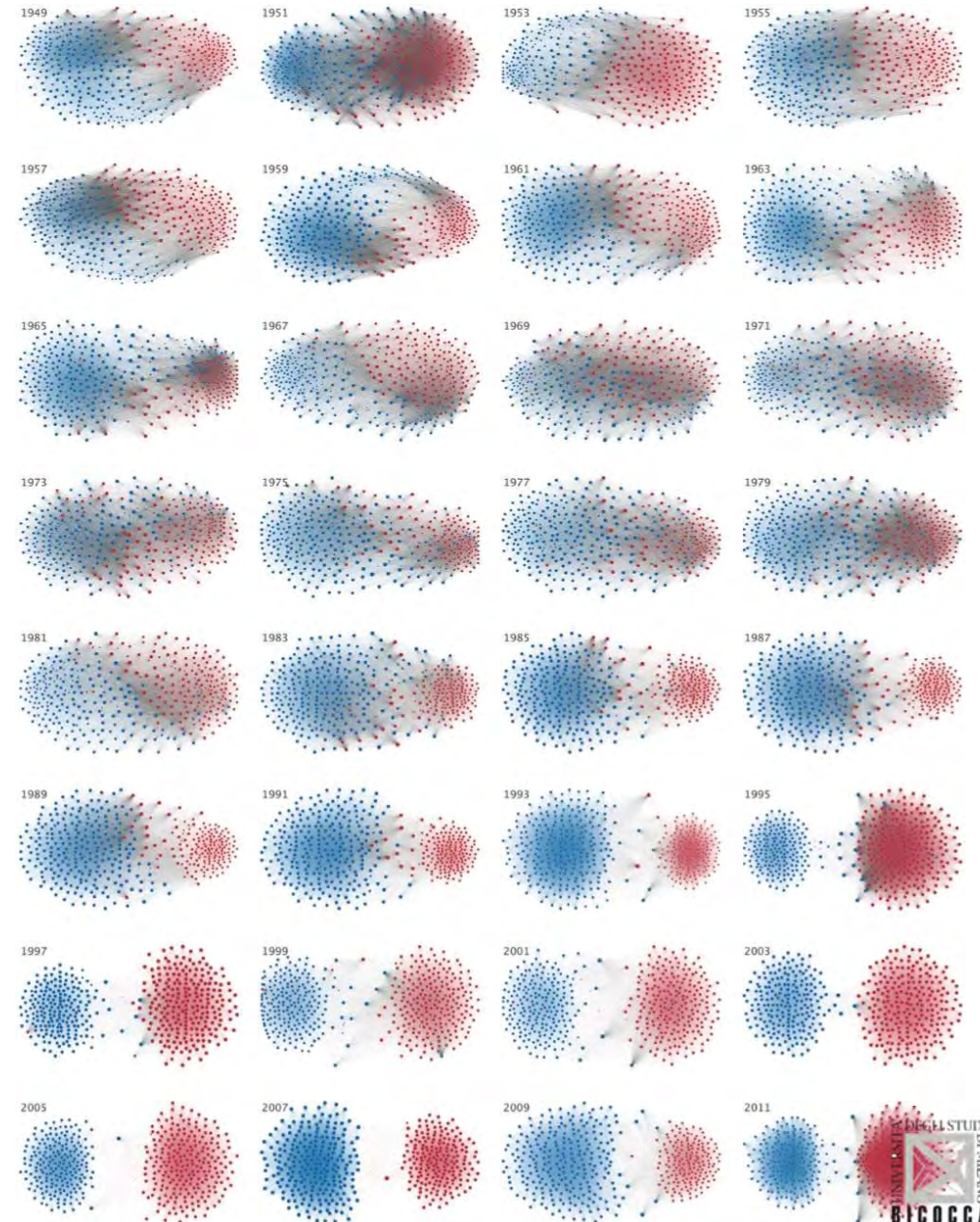
partisanship in the U.S. Congress has been increasing exponentially for over 60 years

Andris C, et al. 2015, PLoS ONE 10(4)

2nd problem

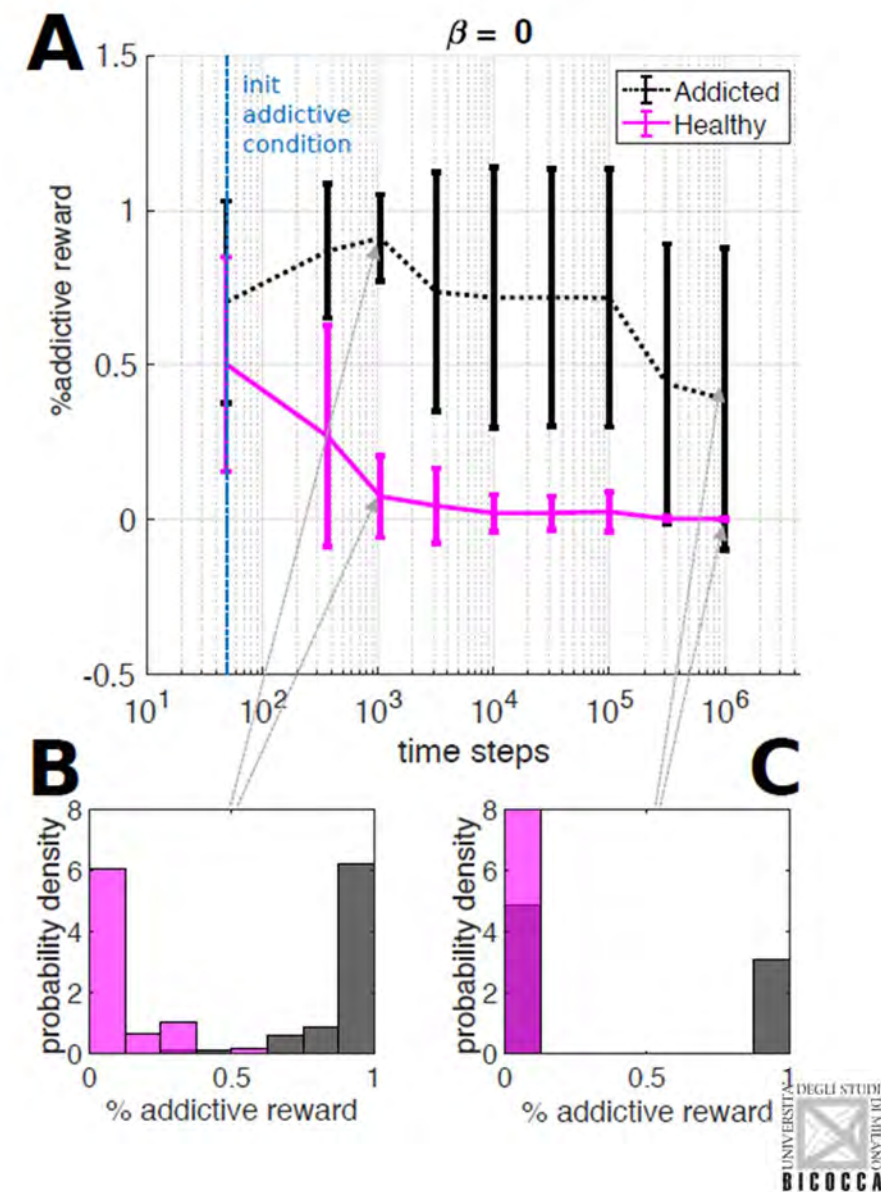
Humans have a natural homophily tendency

Dimitri Ognibene



Early experience and interventions can have a drastic impact also on problematics (addictive) behavior

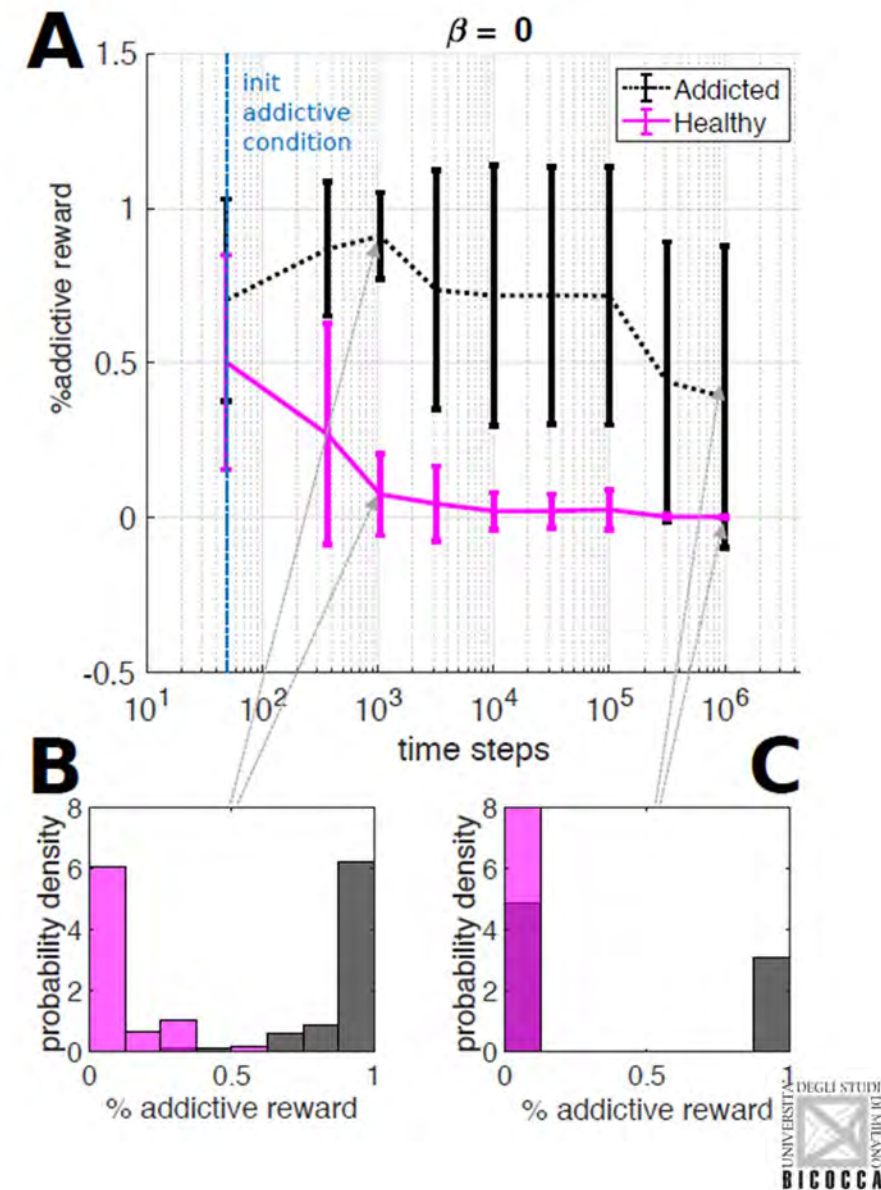
Ognibene, Fiore and Gu, Neural Networks, 2019



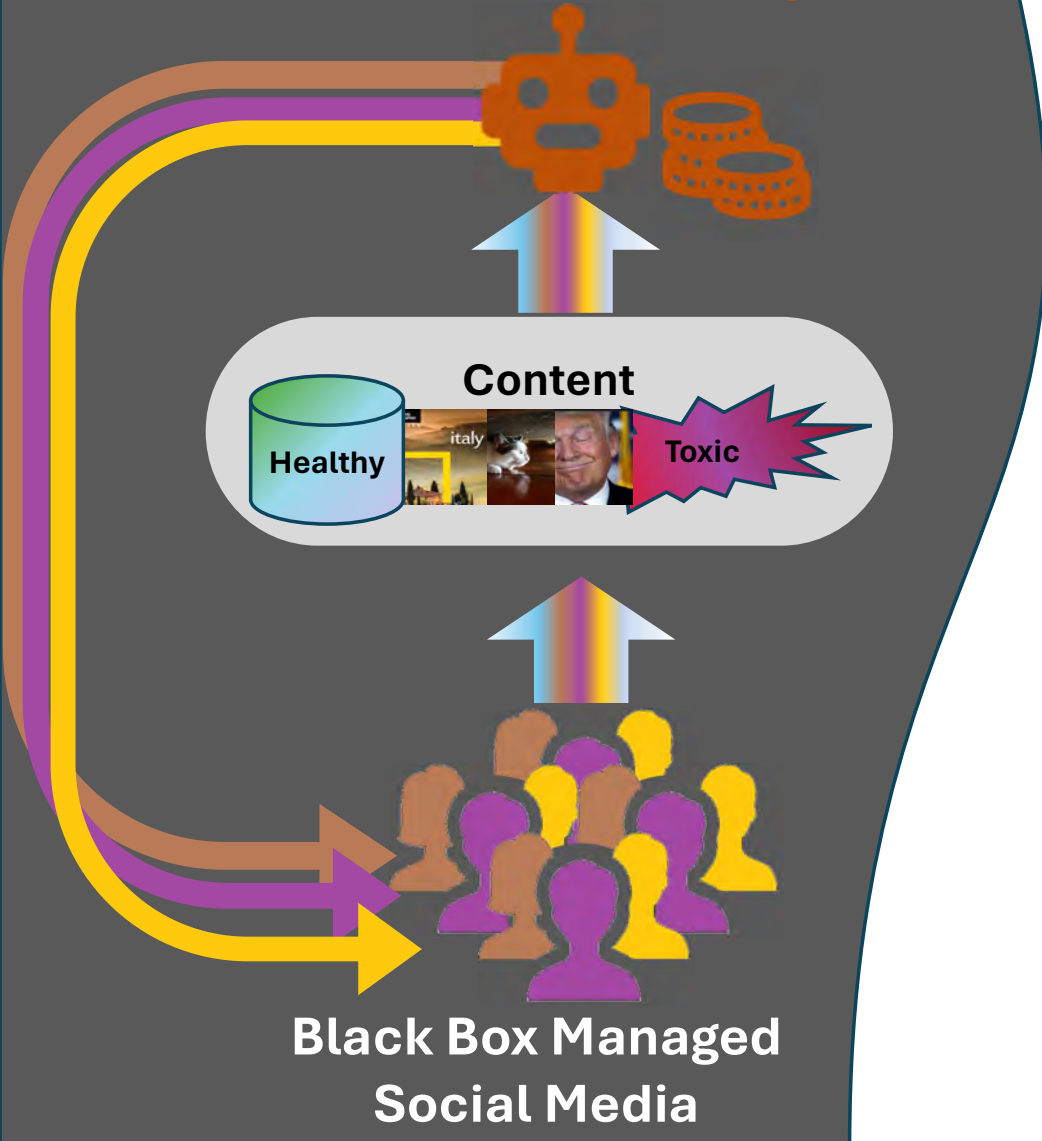
Early experience and interventions can have a drastic impact also on problematics (addictive) behavior

Education may help contrasting polarization and progressing toward Global Harwell

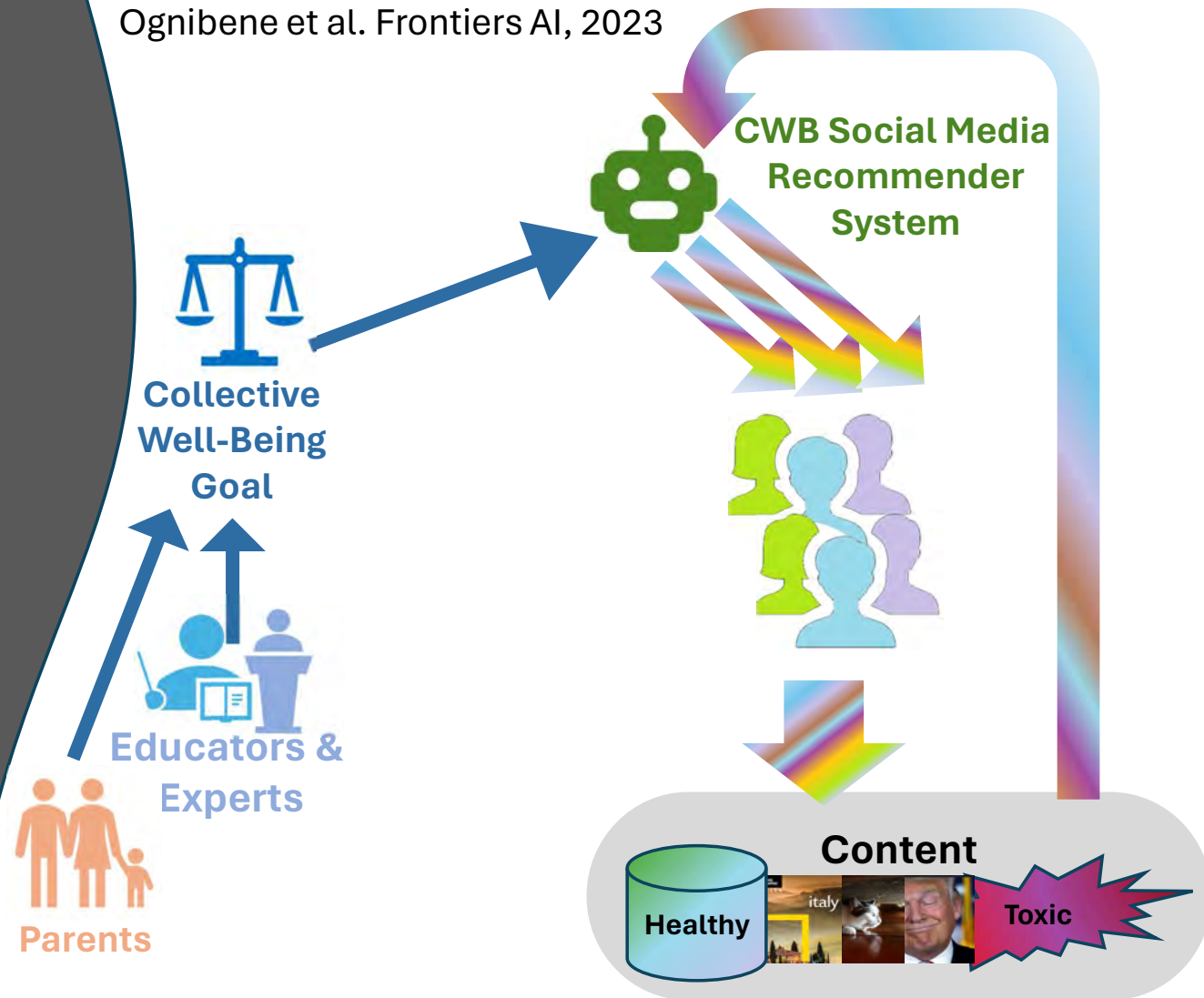
Ognibene, Fiore and Gu, Neural Networks, 2019



Undisclosed Objectives Social Media Recommender System

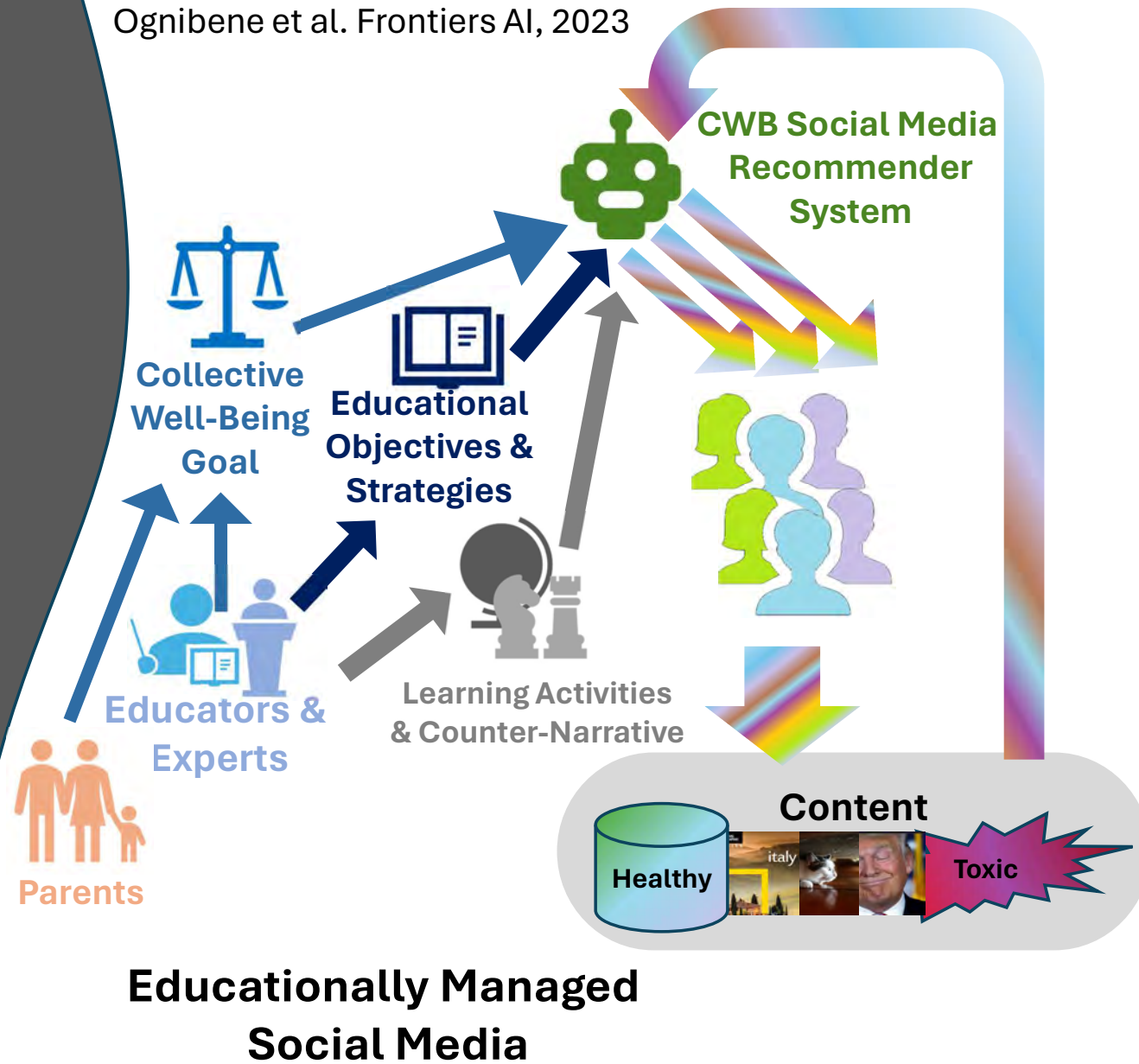


Ognibene et al. Frontiers AI, 2023



**Educationally Managed
Social Media**

Ognibene et al. Frontiers AI, 2023





•An image showing that social media connect different people with different cultures, contrasting values and conflicting perspectives

•Designer|1024 × 1024

jpg|Created now

•Share

•Save

•Download

•Customise

•Content credentials

•Generated with AI · 15 January 2024 at 1:30 am



**PATRIOTIC
FRUIT PIZZA**
GLUTEN FREE ★ DAIRY FREE



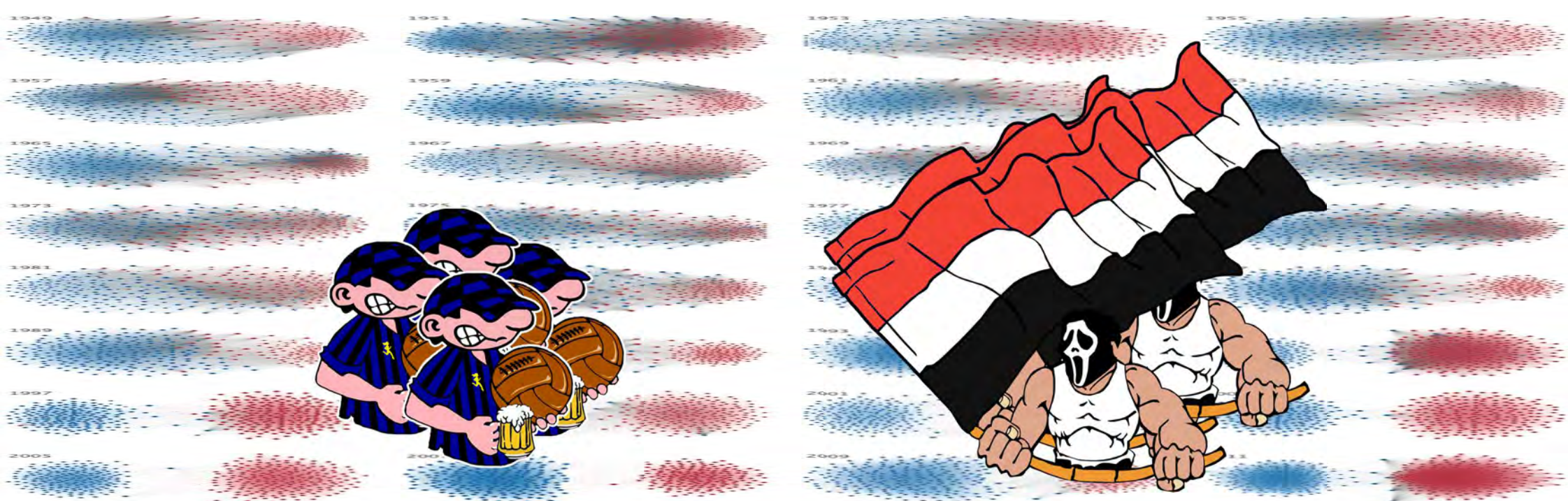


Dimitri Ognibene

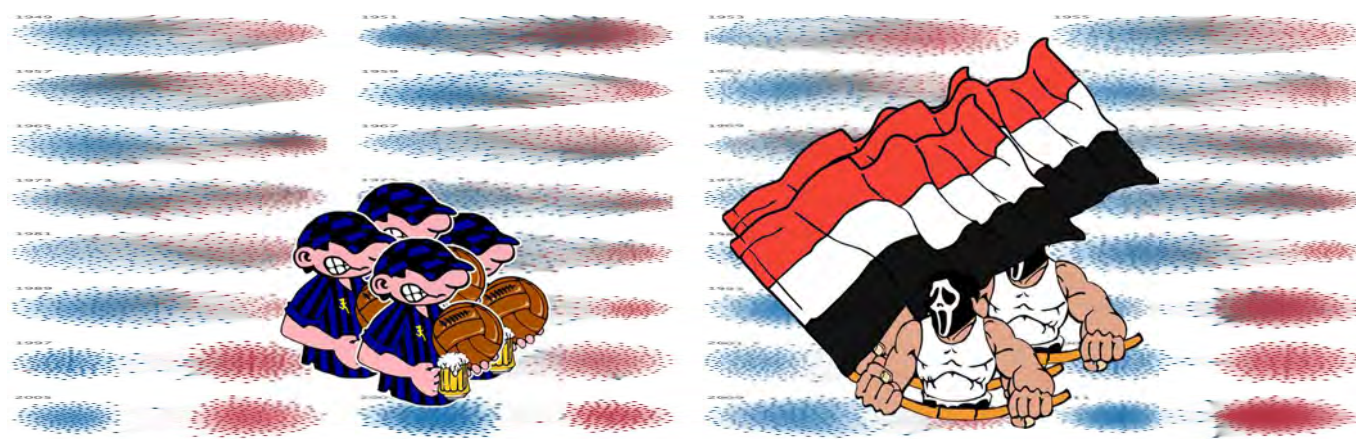
Backfire

<https://www.pnas.org/content/115/37/9216>

CONTACT WITH DIAMETRICALLY OPPOSITE
OPINIONS INCREASES **POLARIZATION**
AND ENGAGEMENT (FIGTHS/FLAMES)



Education may help contrasting polarization and progressing toward Global Harwell

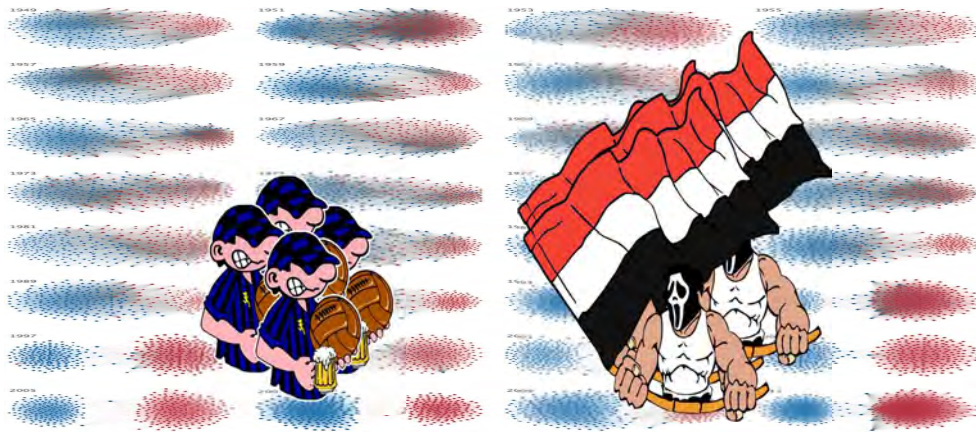


3rd problem

How to define global educational objectives in an already polarized and connected world

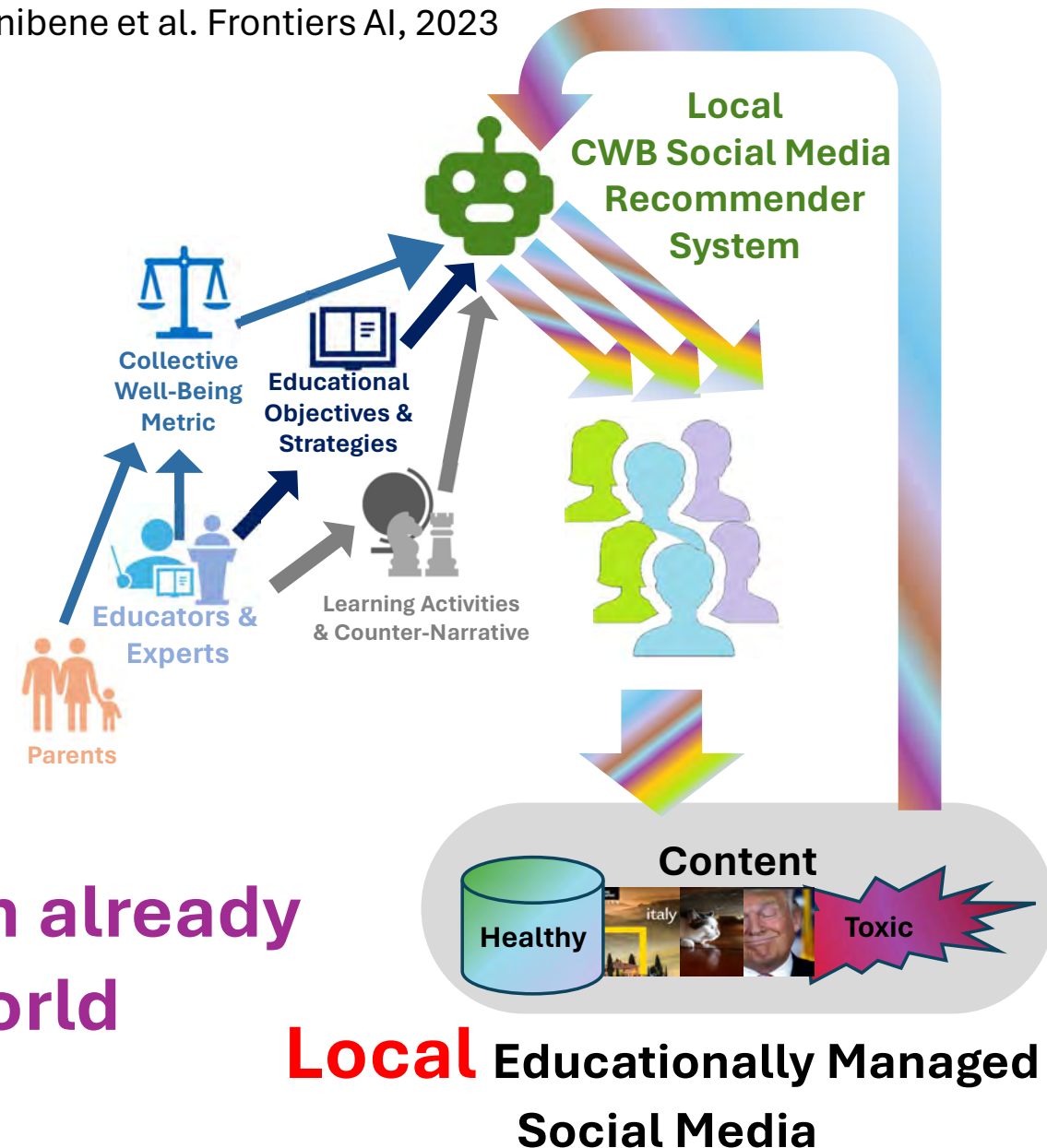
Dimitri Ognibene

Ognibene et al. Frontiers AI, 2023



3rd problem

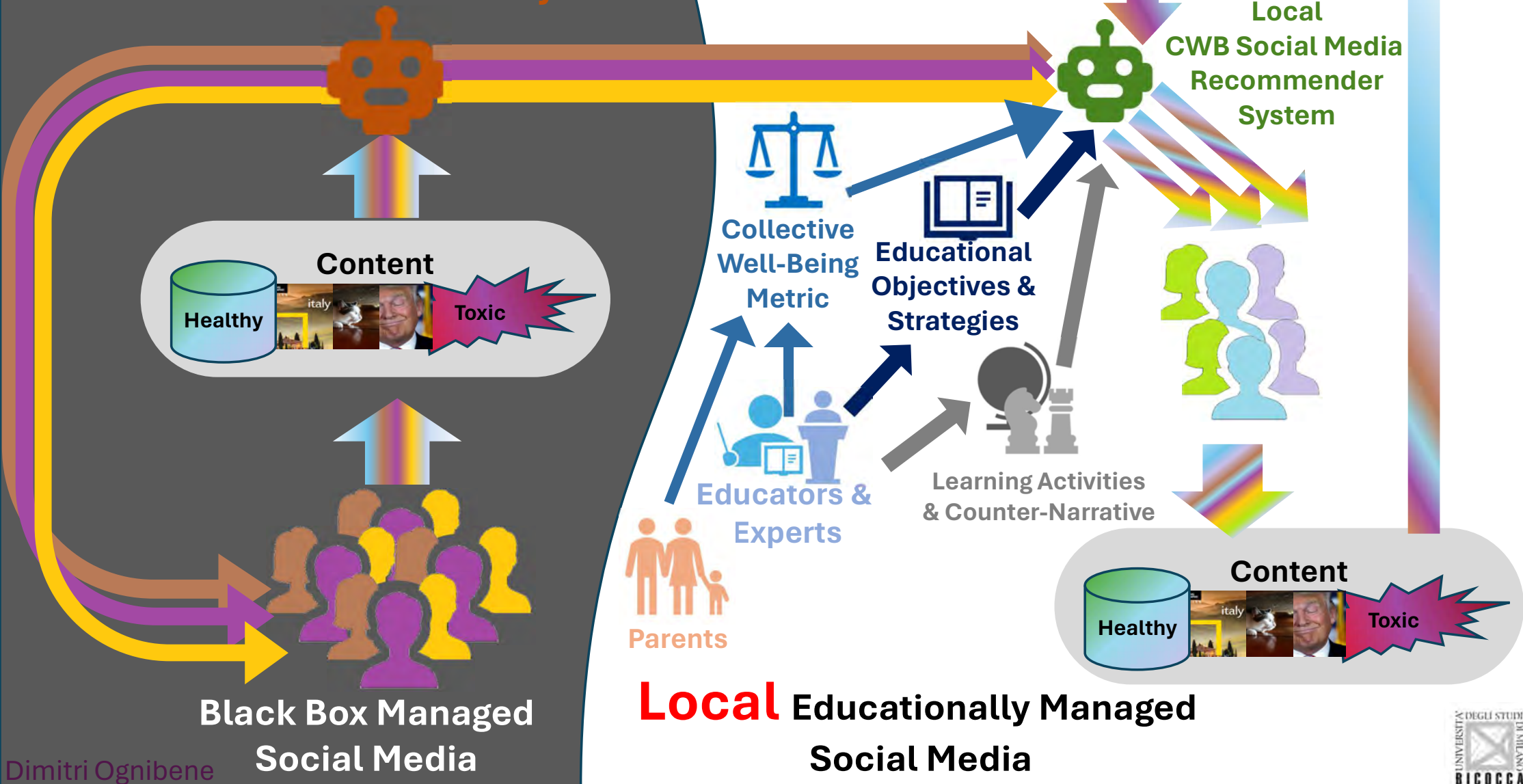
How to define ~~global~~ **local**
educational objectives in an already
polarized and connected world

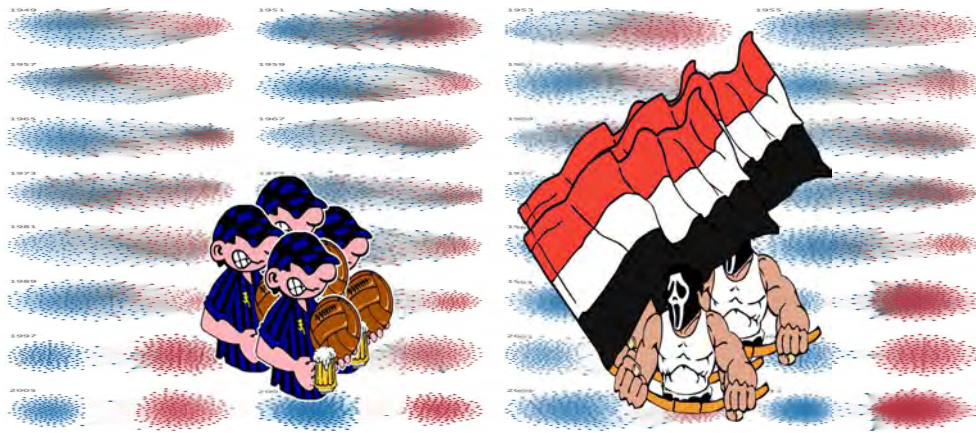


Local Educationally Managed
Social Media

Undisclosed Objectives Social Media Recommender System

Ognibene et al. Frontiers AI, 2023

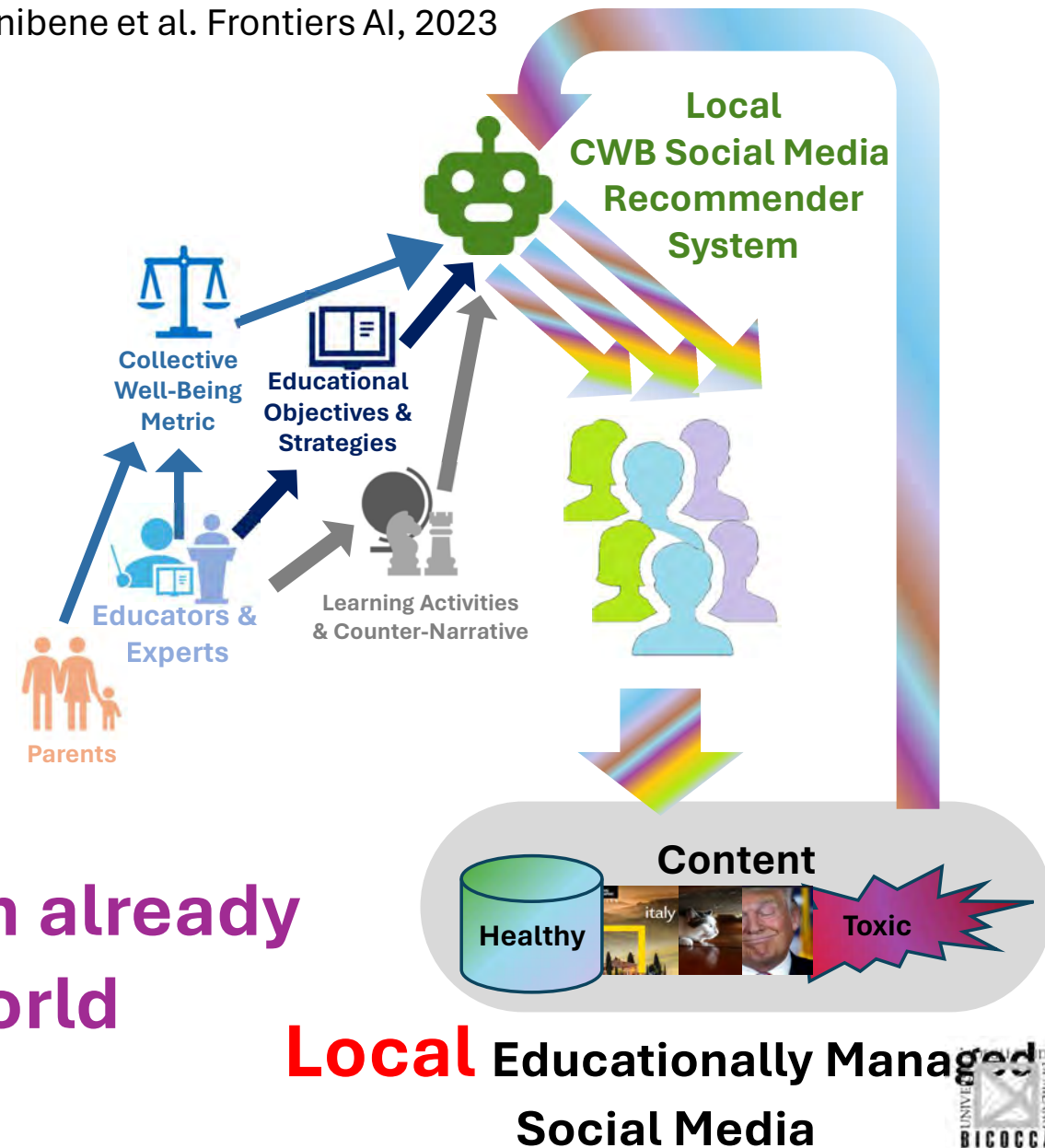




3rd problem

How to define ~~global~~ **local**
educational objectives in an already
polarized and connected world

Dimitri Ognibene



1949

1951

1953

1955

1957

1959

1965

1963

1973

1975

1979

1981

1983

1985

1989

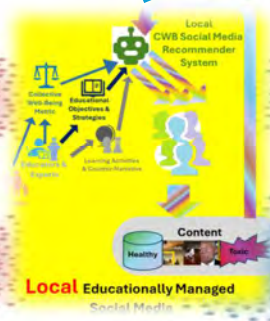
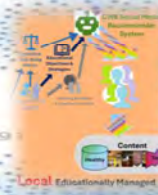
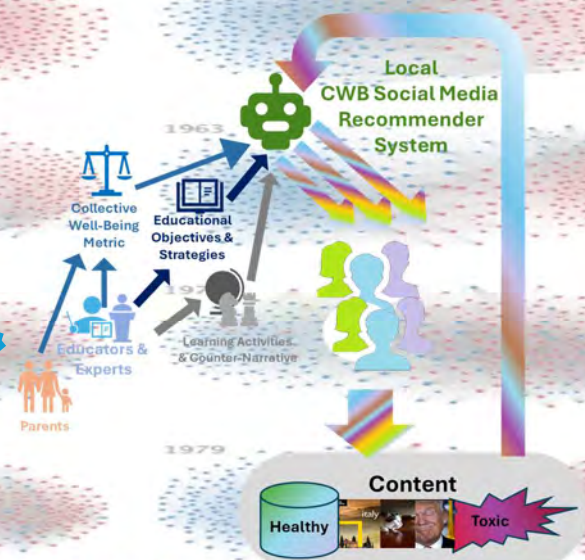
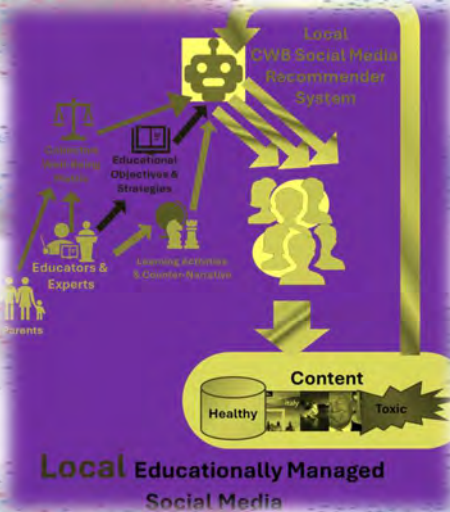
1991

1993

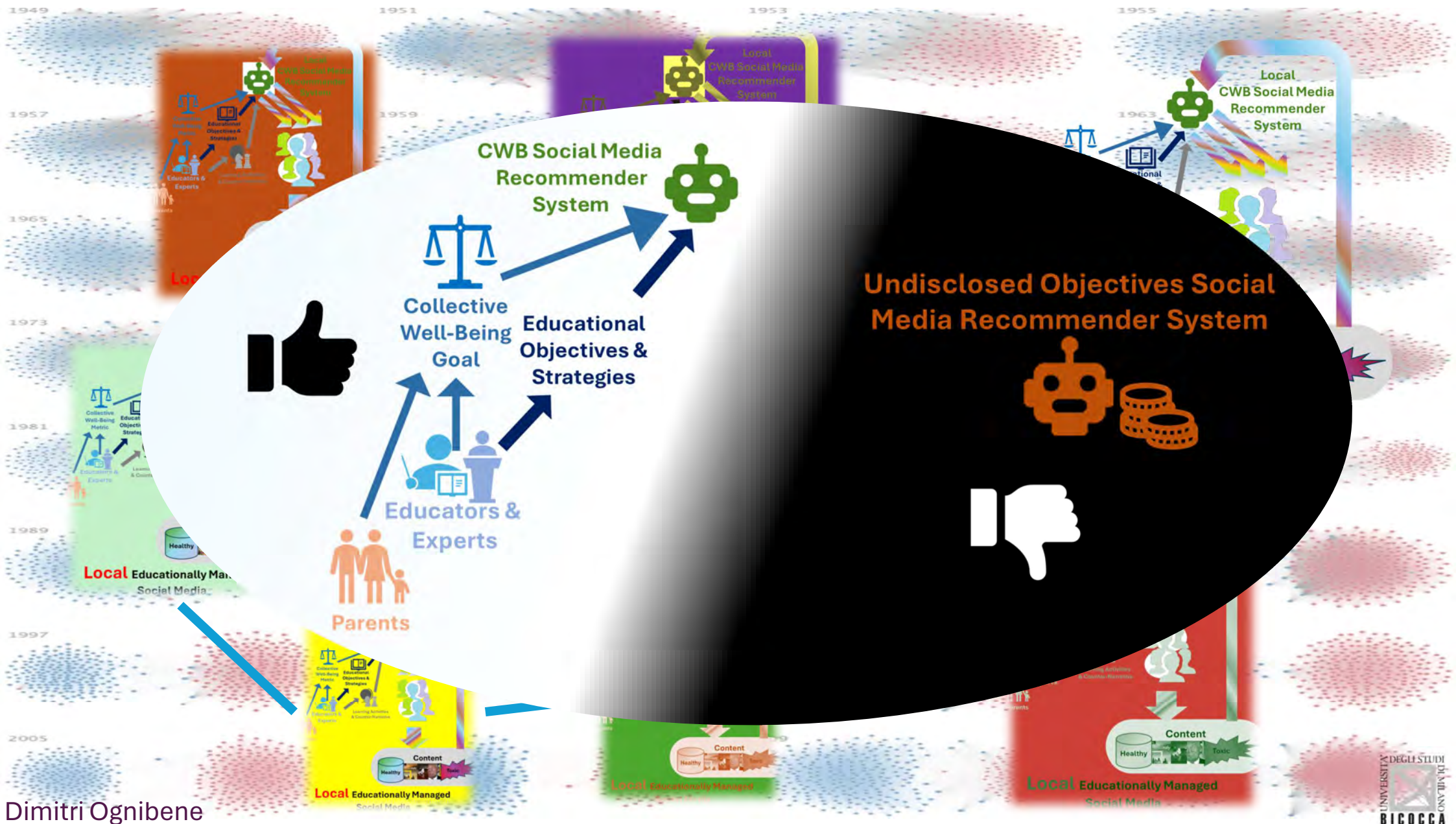
1997

1999

2005



Dimitri Ognibene

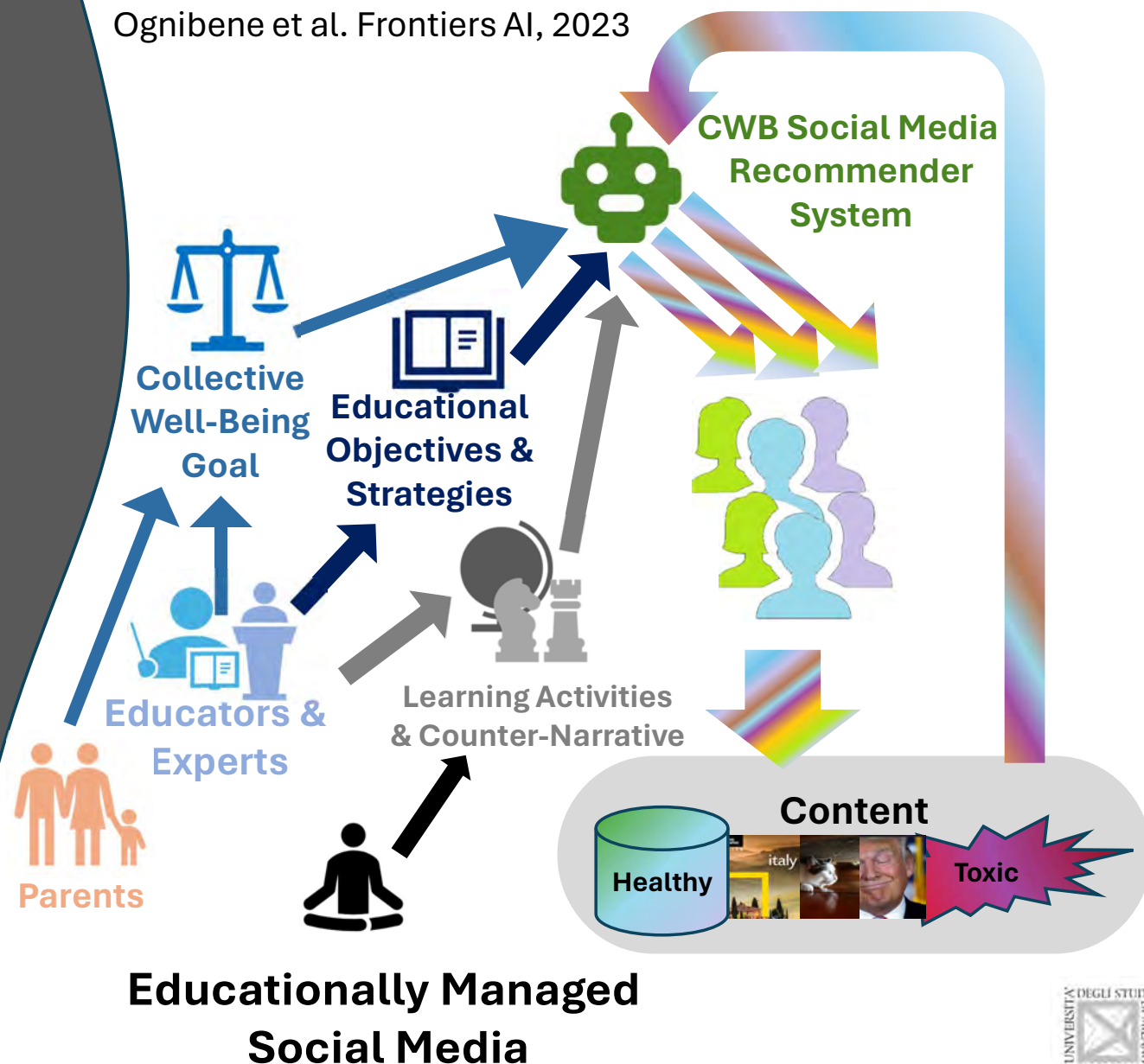


Thanks for your attention!

Today talks by Prof Eimler, Dr Borsting and Prof Nanayakkara about empathy, compassion, and meditation suggest to add it as an educational activity useful to achieve armony and tackle polarization

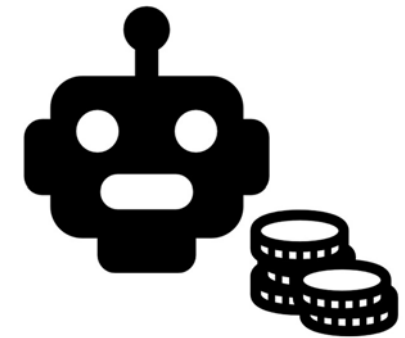
Dimitri Ognibene

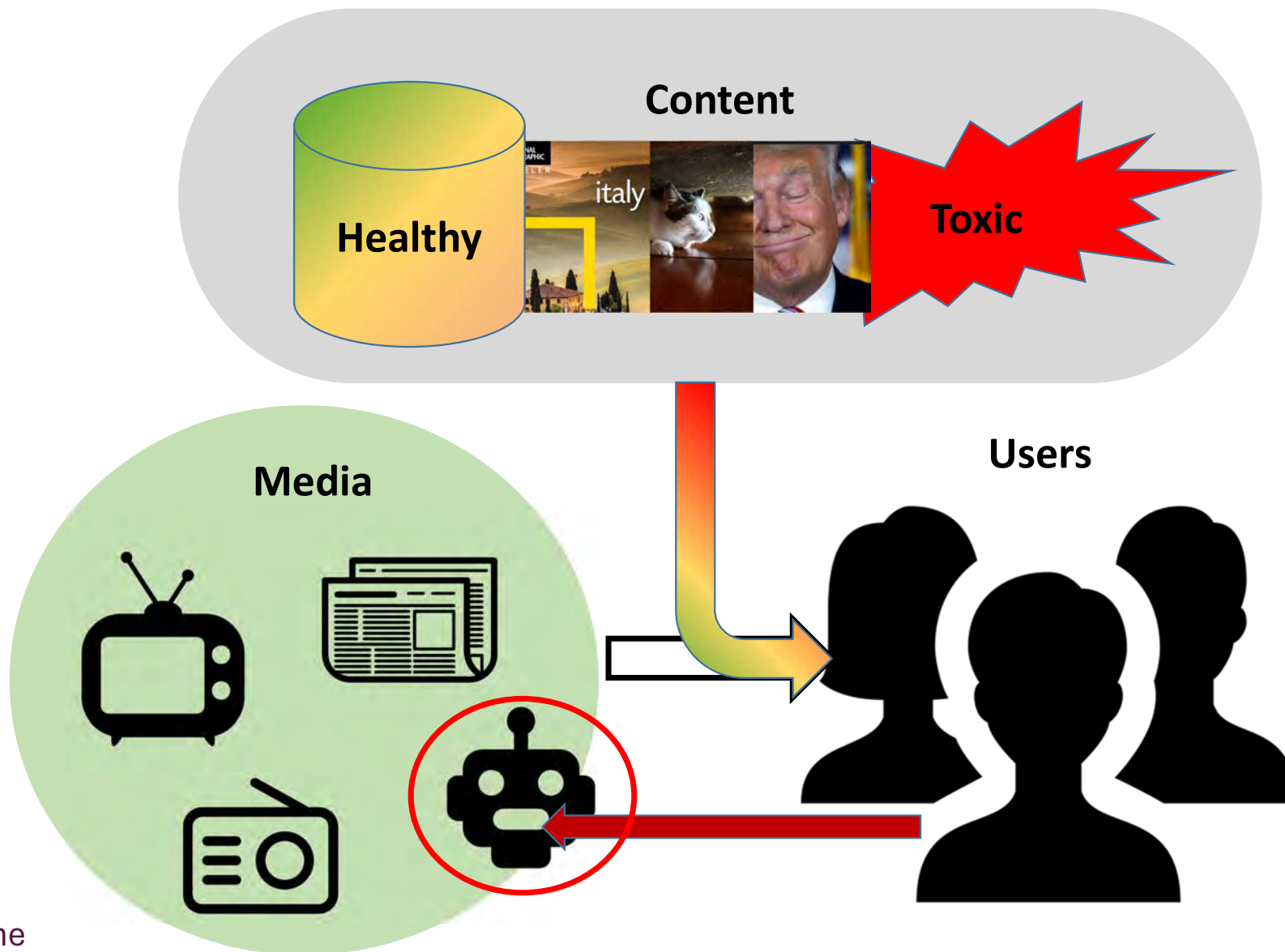
Ognibene et al. Frontiers AI, 2023



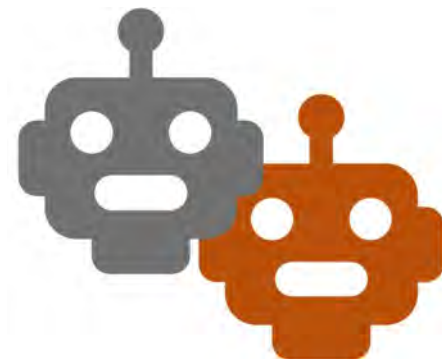
Social Media AI Algorithms and Polarization

- Filter bubbles
 - AI actively confirms one's bias
- Echo Chambers
 - AI actively find same minded people
- Engagement driven business model
 - AI pursues engagement generated both by enjoyment or contrasts
- All these processes may exacerbate Polarization

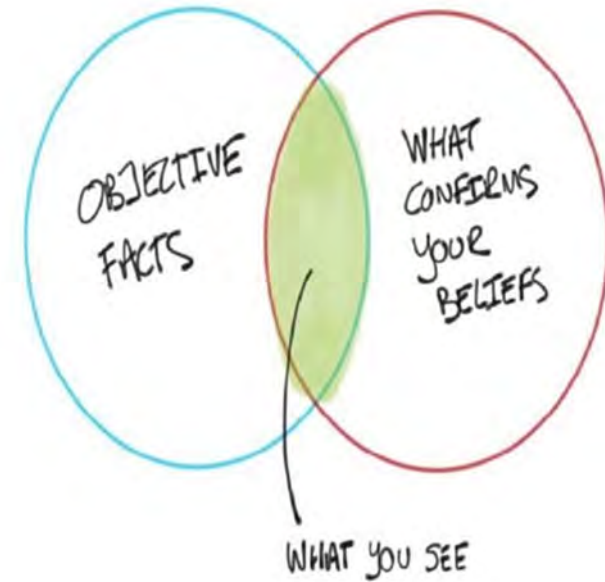
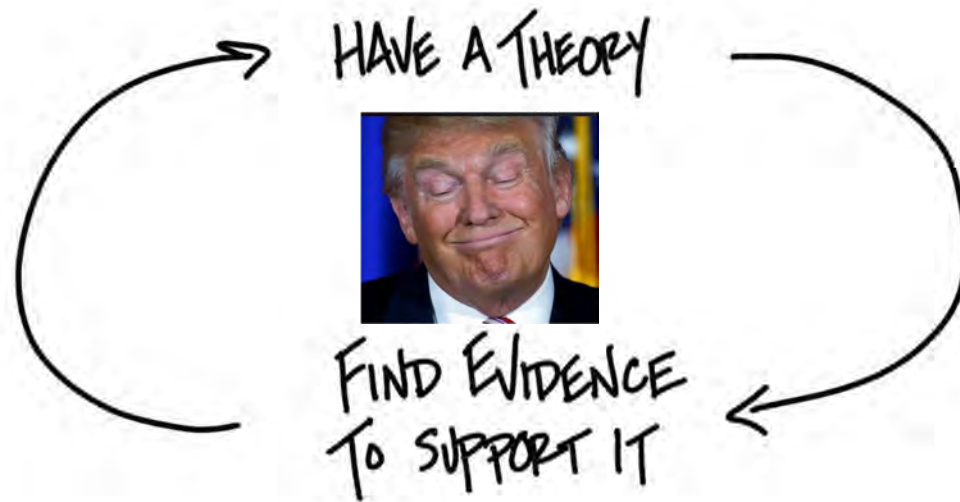




The new ways to the Darkside: unregulated social media and related algorithms

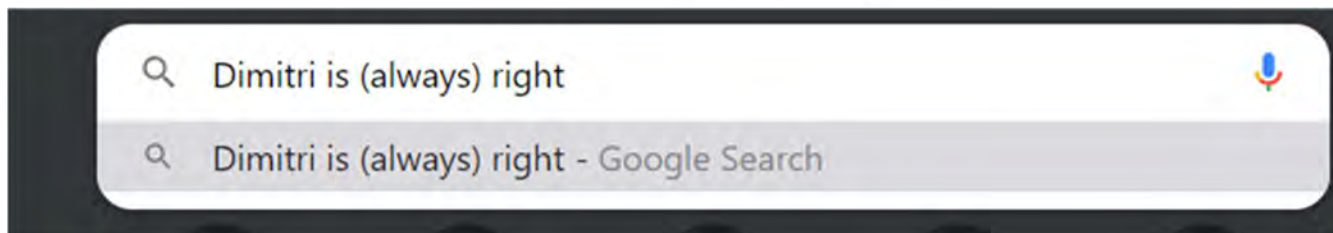


Confirmation Bias



I'll find *what* I need to be right...

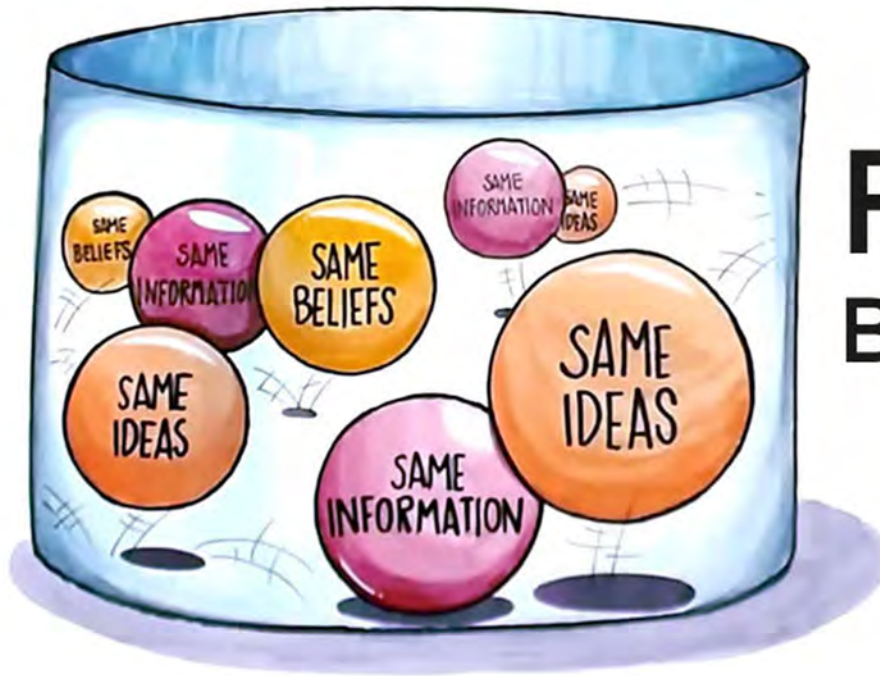
BEHAVIOR | QA



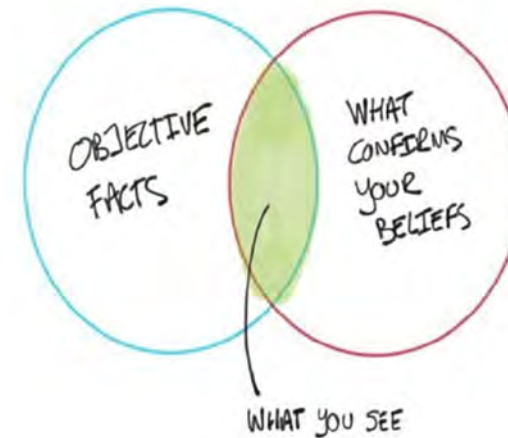


Algorithm personalization

I'll find *what* you need to be right
(even before you look for it)



Filter Bubbles



[Schmidt et al., 2017, Del Vicario et al., 2016]

Neumann, 2013

Echo Chamber

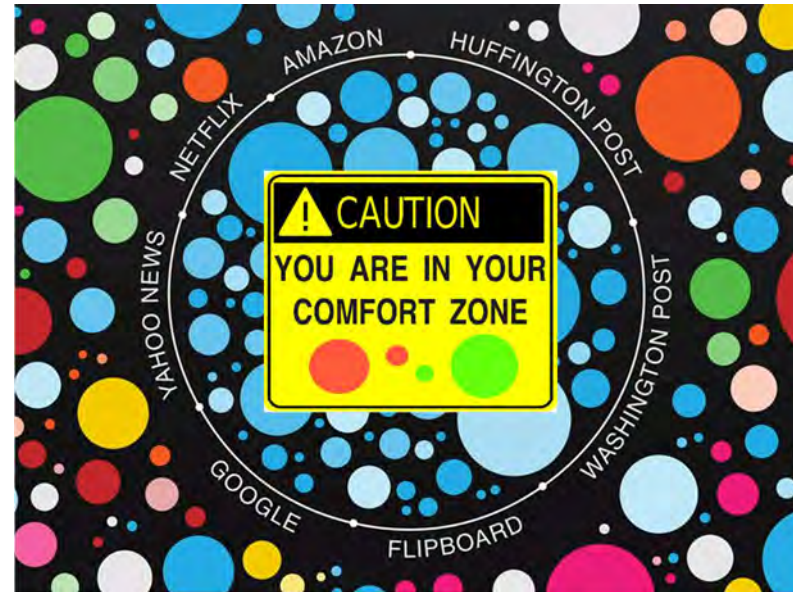


I'll find who I need...



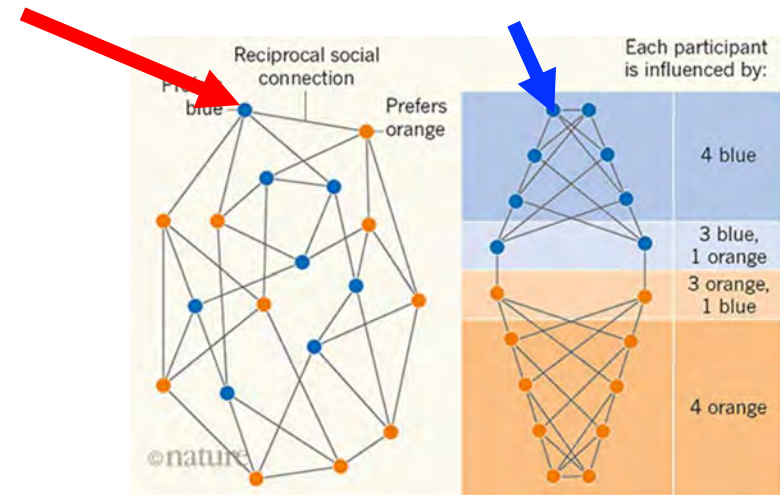
I'll find who You need...
(even before you think about it)

Dimitri Ognibene

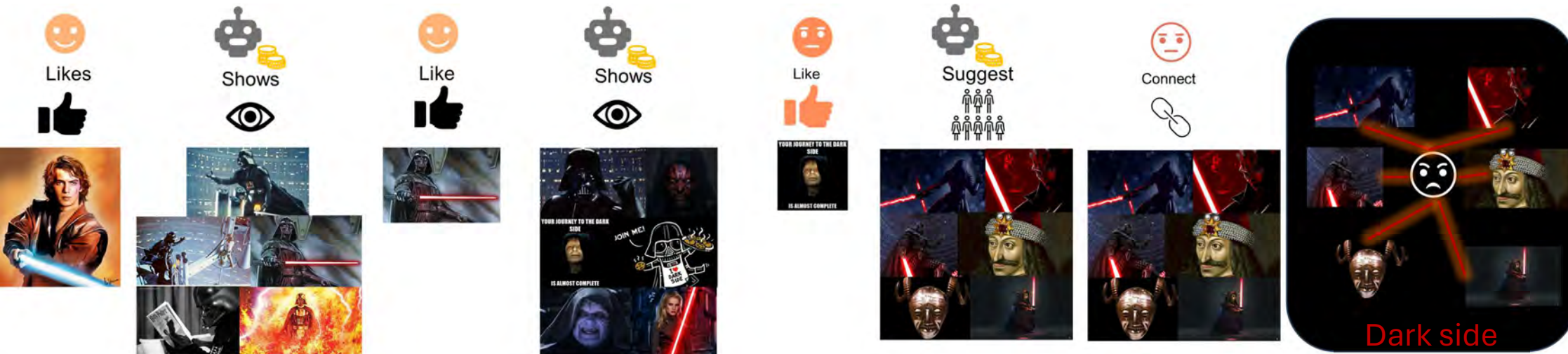


You are not here

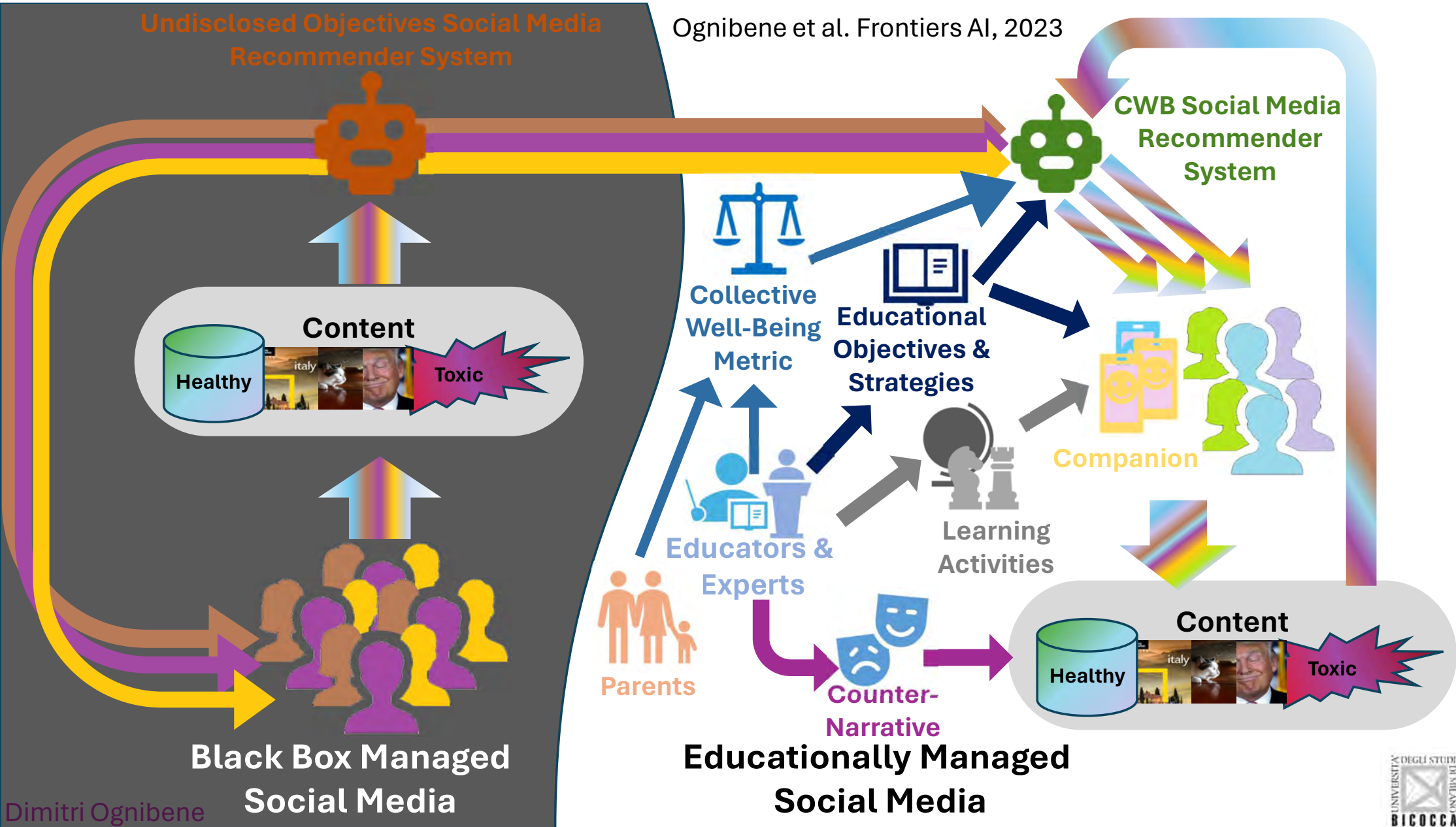
You are here



How do Social Media AIs escalate mistakes?



Ognibene et al. Frontiers AI, 2023



Dimitri Ognibene